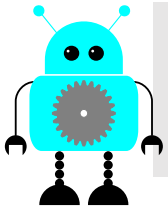


Adding Suffixes to Verbs



Suffixes are letters added to the end of a root word to make a new word. The suffixes -ing, -ed and -er can be added to verbs to make new words.

1) Add the suffixes -ing and -ed to the verbs below to make a new word.

	Suffix -ing	Suffix -ed
jump		
walk		
paint		
play		
start		

2) Tick the words that the suffix -er can be added to.

teach	
farm	
shed	
help	

3) Put each word into the correct sentence.

climber	hunted	reading	worked
---------	--------	---------	--------

The lion _____ for food.

Josh likes _____ books.

The man _____ at the bank.

The _____ reached the top of the cliff.

